



### Anti-Kv $\beta$ 1.1 potassium channel subunit, NeuroMab clone K9/40

#### Immunogen:

Synthetic peptide amino acids 7-28 (unique N-terminus) of rat Kv $\beta$ 1.1  
(TEHNLKSRNGEDRLLSKQSST; accession number NP\_058999)  
Human: 100% identity (22/22 amino acids identical)  
Mouse=100% identity (22/22 amino acids identical)

#### Monoclonal antibody info:

Mouse strain: Balb/C  
Myeloma cell: SP2/0  
Mouse Ig Isotype: IgG2b

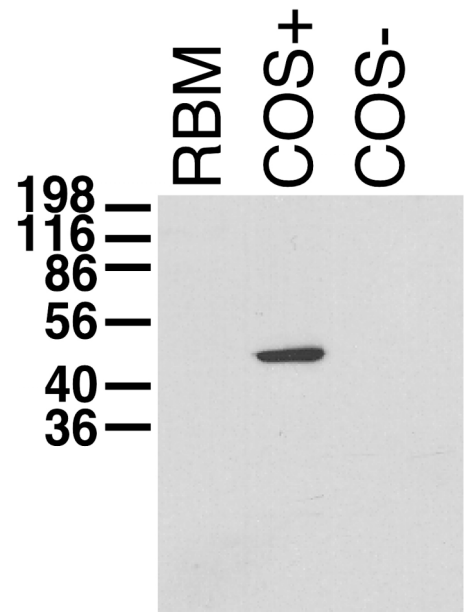
#### NeuroMab Applications:

Immunoblot, Immunohistochemistry and Immunoprecipitation

Species Reactivity: human, mouse, rat  
Does not crossreact with Kv $\beta$ 1.2, Kv $\beta$ 1.3, Kv $\beta$ 2

MW: 44 kDa

Immunoblot on adult rat brain membrane (RBM) and lysates from Kv $\beta$ 1.1 -transfected (COS+) and untransfected (COS-) COS cells



Adult rat striatum (left) and hippocampus (right) immunohistochemistry

