



Anti-DLX1 transcription factor, NeuroMab clone L43/40

Immunogen:

Synthetic peptide amino acids 53-74 (PDGAYSSASSFSRPLGYPYVNS) of human DLX1 also known as distal-less homeobox protein 1, accession number P56177)

Rat: 100% identity (22/22 amino acids identical)

Mouse: 100% identity (22/22 amino acids identical)

Monoclonal antibody info:

Mouse strain: Balb/C

Myeloma cell: SP2/0

Mouse Ig Isotype: IgG2a

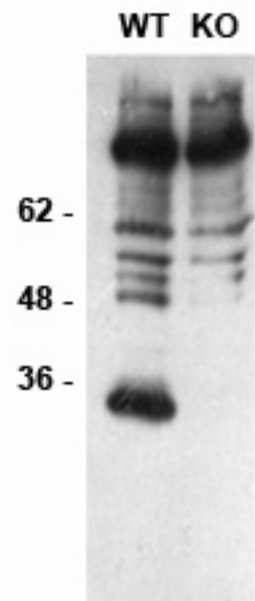
NeuroMab Applications:

Immunoblotting, Immunohistochemistry and Immunoprecipitation

Species Reactivity: human, mouse, rat

MW: 27 kD

Immunoblot versus whole cell extracts from embryonic day 15 telencephalon from DLX1/2 wild-type (WT) and knockout (KO) mice. Data courtesy of Dr. Mario Hernan and Dr. John Rubenstein, UCSF.



Adult rat hippocampus immunohistochemistry

